



# **Chincoteague Island, Virginia Oyster Bay II Community Newsletter June 2016**

Hello OB II,

I hope everyone enjoyed a relaxing Memorial Day weekend.

Finally, the sun has been out and has stayed out for more than a day or two at a time. The consecutive rainy days were getting a little ridiculous.

Thank you Neil Faircloth and Pete Steffes for sharing your photographs of the Rose Breasted Grosbeaks (see above and inside) that you managed to capture in our community. The birds look like camera hams, making eye contact with their photographers.

It's that time of the year again when we all have to remind ourselves to carry protection, namely mosquito repellent. Don't leave home without it!

## **Neighborhood News ...**

The new home on Lot #273 Green Glade Ct. is complete and just needs an owner. Homes on lots #209 and #295 are near completion and home construction has begun on Lot #234 on Pine Tree Way.

## **Updates From The Board ...**

The spring treatment of the entry pond for duck week has been effective, the fountain looks great and it has held up so far this season (knock on wood). Further, Jim Kalil has done a nice job cleaning up the community and maintaining the common areas.

POA members are encouraged to take a look at the community website <http://www.ob2poa.org> as the format and content has continued to evolve. Note that the "Members" section has been further divided to include new subcategories (tabs) including 'Historical Information' about the community and 'State of Virginia information' that concerns property owners associations.

If you have an item that you think would be of interest to the members of the POA and would like it posted on our community website, please contact or submit it to a member of the communications committee for consideration.



# A Rosy Outlook ...

By Dave Hudgins

The Rose Breasted Grosbeak is a beautiful migrant that may just pop up in the community, like the one Neal Faircloth photographed on the first page of this newsletter and another photo (see below) taken by Pete Steffes. They generally move through the area in May and could stop by your yard or feeder for a week or two before completing their journey to a suitable nesting ground.



**Male Rose Breasted Grosbeak**

The male has a striking appearance with its white body with black head, tail and wings. The wings have white patches and the tail has white covert feathers. The large red patch on the chest might invoke blood running down its front.

Like most female birds, his mate will be more of a drab brownish on top with white patches on the wings and a large white stripe above the eye. The body is whitish with streaks of brown and it may show some rose red feathers mixed in on the chest.



**Female Rose Breasted Grosbeak**

A key diagnostic mark is the enormous beak. In fact, the name "grosbeak" is from the French word *grosbec* which means "large beak."

The rose breasted grosbeak breeding range stretches across the northeastern U.S. and, up into southeastern and central Canada. They breed in moist deciduous-coniferous forests, thickets, and semi-open habitats. They gravitate toward second-growth woods, suburban areas, parks, gardens, and orchards, as well as shrubby forest edges next to streams, ponds, marshes, roads, or pastures.

During migration, grosbeaks will stop in a variety of habitats. Grosbeaks feed on insects, wild fruit and berries and seeds. They are regular visitors to sunflower seed feeders. They will also eat safflower seeds and raw peanuts.

If you've missed them during the spring migration, maybe you will catch them heading south in the fall as they head towards Central America and northern South America. In the meantime, happy birding.

## Neither a Horseshoe nor a Crab ...

By Jean Hubbard

The American horseshoe crab, *Limulus Polyphemus*, is often referred to as a living fossil and is thought to have evolved more than 200 million years ago. The name "horseshoe crab" originates from the rounded shape of the head. Just like the shoe on a horse's foot, the head is rounded and U-shaped. Although horseshoe crabs look similar to crabs and lobsters, they are actually more closely related to scorpions and spiders.

Of all marine species, horseshoe crabs have contributed the most to medical and physiological research. Most of what we know about human vision was drawn from scientists' work with cells found in horseshoe crab eyes. Their eyes contain a neural network that has provided much insight about physiological processes operating in our visual system, such as light adaptation and lateral inhibition. The horseshoe crab remains an attractive model for vision research because the animal is large and hardy for an invertebrate, its retinal neurons are big and easily accessible, its visual system is compact and extensively studied, and its visual behavior is well defined.



**Photo courtesy of U.S. Fish & Wildlife Services**

This animal continues to play an indispensable role in biomedical research. Their blood is blue (caused by the presence of hemocyanin - human blood is red because of the presence of hemoglobin), and it has unique bacteria fighting ability which is used by pharmaceutical and biomedical industries for important medical research and testing.



**Photo courtesy of U.S. Fish & Wildlife Services**

In the late spring and early summer, horseshoe crabs arrive on the beaches en masse to lay their eggs. The peak of spawning on the Atlantic coast occurs in Delaware Bay where thousands of crabs will arrive on the sandy beaches in May and June. Delaware Bay provides an excellent spawning area for crabs because the sandy beaches are protected from harsh wave action. The beaches' sand and pebble mixture is perfect for incubating horseshoe crab eggs. Crabs arrive on the spawning beaches during the high tides of full and new moons when the water rises highest on the beach.



When the female is ready to lay her eggs, she crawls up to the high water line on the beach with a male attached to her. The male claps onto the female's shell with a modified set of claws. During spawning, the female crab partially buries herself in the sand while she deposits a cluster of about 4,000 tiny green eggs. In an evening of egg laying a female crab can lay several egg clusters and she may spawn repeatedly over several nights to lay 100,000 or more eggs. The eggs will hatch within two to four weeks. The larvae will emerge from the sandy beaches and enter the water during a high tide nearly a month later. The larvae look like miniature adult horseshoe crabs without tails.

Horseshoe crabs feed on a variety of marine worms, mollusks, and other small marine animals. These prehistoric creatures can grow to about 20 inches in width. Their eggs are an essential food source for many migrating shorebirds, including red knots, semipalmated sandpipers, sanderlings and dowithers, and their eggs and larvae are consumed by many fish such as American eel, killifish, weakfish, silversides, summer flounder and winter flounder.

There are four species of horseshoe crabs around the world and only one in North America. The species in North America is the most abundant in the world and ranges on the Atlantic coast from Maine to the Yucatan Peninsula.

*This information is courtesy of The National Center for Biotechnology Information, The National Wildlife Federation and U.S. Fish & Wildlife Services*

## All Around Town ...

Whether you choose to stay inside or outside, there's no shortage of things to do, watch, eat and enjoy on Chincoteague Island and in the area during the month of June ...

### **Sat., June 4<sup>th</sup>, 8am - Noon, Clean the Bay Day**

Enjoy an opportunity to make significant contribution to the health and condition of the Chesapeake Bay. Every piece of trash picked up is directly beneficial to the overall vigor and vitality of the bay. Bring your dinghies, kayaks, waders or walking shoes and spend the morning on the water and on the beach. Hamburgers, hotdogs and soda will be served afterwards at the Oyster Farm Marina at Kings Creek at the end of the dock surrounded by the exquisite watershed you just nurtured and protected. Check in at 8am. Register at <http://www.cbf.org/events/clean-the-bay-day/2016-eastern-shore-kings-creek-watershed>



**Sat., June 4<sup>th</sup>, 11<sup>th</sup>, 18<sup>th</sup>, 25<sup>th</sup>, 9am - 1pm, Chincoteague Island Farmer's Market** – Look for fresh fruits and vegetables, seafood, eggs, meat, baked goods, jams, plants and flowers, plus arts 'n crafts – all from local producers. Also open on Wed. from May 25<sup>th</sup> thru Sept. 7<sup>th</sup> from 9am - 1pm. Open rain or shine.

**Sat., June 4<sup>th</sup>, 8am, Centennial 5K Run at the Assateague Island National Seashore** – 100 runner limit so register today at [RunSighUp.com](http://RunSighUp.com) Free event, donations accepted. Race begins 8am at the Wildlife Loop.



Photo courtesy of NASA

**Thurs., June 9<sup>th</sup>, 5pm - 6pm, NASA Launch Range Photography, Tips & Tricks** – Presented by Jim Mason-Foley, Wallops Optical Systems Manager, this will be opportunity to learn how the professionals take award-winning photographs. Tips include lighting, aperture and shutter settings, secrets behind F-Stops, DSLR versus Point n Shoot cameras and much more. Location: Wallops Flight Facility Visitor Center, Rte. 175. For info call 757.824.1344 or visit <http://www.nasa.gov/centers/wallops/visitorcenter>

### **Sat., June 11<sup>th</sup>, 9am - 2pm, Artful Flea**

An arts 'n crafts and community yard sale, the Artful Flea features an amazing array of arts 'n crafts, collectibles and attic treasures, plus food, music and fun for everyone. You never know what you'll find. Rain or shine. Location: CCA Headquarters, 6309 Church St. For more info, go online to <http://www.chincoteagueculturalalliance.org/the-artful-flea.html>

### **Sat., June 11<sup>th</sup>, 5pm - 9pm, 2<sup>nd</sup> Saturday Art Stroll**

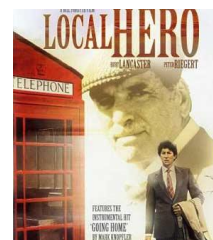
On the 2<sup>nd</sup> Saturday of each month, from April thru November, participating galleries and shops on Main St. and Maddox Blvd. offer an array of special events from 5pm – 9pm (and sometimes earlier in the day), including arts 'n crafts, demonstrations, book signings and readings, art exhibits, tastings, music and the unexpected. For info, visit [www.chincoteagueculturalalliance.org/2nd-saturday-art-stroll.html](http://www.chincoteagueculturalalliance.org/2nd-saturday-art-stroll.html)

### **Sat., June 18<sup>th</sup>, 7pm, CCA Island Coffeehouse**

Each month, the Island Coffeehouse presents a variety of arts in a listening room environment. Enjoy performances by acoustic musicians and spoken word artists. Everyone is welcome. Doors open at 6:30pm, performances begin at 7pm. Admission: \$5, \$3 for students aged 22 and under. Location: 6309 Church St. For more info, visit <http://www.chincoteagueculturalalliance.org/coffeehouse.html>

### **Thurs., June 30<sup>th</sup>, Dusk, CCA' Summer Cinema Series at Robert Reed Downtown Waterfront Park Featuring "Local Hero" (1983)**

– An up and coming Houston oil executive "Mac" MacIntyre (Peter Riegert) gets more than he bargained for when a seemingly simple business trip to Scotland changes his outlook on life. Sent by his colorful boss (Burt Lancaster) to a small fishing village, Mac is looking to quickly buy out the townspeople so that he can build a new oil refinery. After a taste of country life, Mac begins to question if he is on the right side of this transaction. Rated PG. Bring a blanket or a chair, Popcorn and soda available. In the case or rain, the film will be shown at CCA headquarters (6309 Church St.).



**OB II Community Property Owners Association  
2016 Membership Committees**

**Architectural Committee**

*Kathy Bradley (Chairperson)*

*Neal Faircloth*

*Maria Paccioretti*

*Ethan Simonson*

*Phil Hoey (alt.)*

**Budget Audit Committee**

*Karen Frank (Chairperson)*

*Tim Landolt (Audit)*

*Phil Hoey*

**Communications Committee**

*Jean Hubbard (Chairperson)*

*Neal Faircloth*

*Dave Hudgins*

*Andy Suchoski*

**Community Improvement Committee**

*Dave Hudgins (Chairperson)*

*Jean Hubbard*

*Jeff Shelton*

*Buford T. Rowland (alt.)*

**Documentation/Records Committee**

*Monica Suchoski (Chairperson)*

*Dave Hudgins*

*Maria Paccioretti*

*Jeff Shelton\**

**Maintenance Committee**

*Kathy Bradley (Chairperson)*

*Terry Bradley*

*Tim Landolt*

*Ethan Simonson*

**Utilities Committee**

*Terry Bradley (Chairperson)*

*Kathy Bradley*

*Jack Keene (on-site rep)*

*Jim Smith*

*\*Corporate Registered Agent for Oyster Bay II Community  
POA and Oyster Bay II Water & Sewage Co., Inc.*

**OB II Community Property Owners Association  
2016 Board of Directors**

***President***

*Buford T. Rowland*

***Vice President***

*Tim Landolt*

***Secretary***

*Dave Hudgins*

***Treasurer***

*Karen Frank*

*Kathy Bradley*

*Neal Faircloth*

*Jean Hubbard*

*John M. (Jack) Keene*

*Maria J. Paccioretti*

*Jeff Shelton*

**Take It Slow ...**

Please be sure to stop at any and all intersections in the community as many people are out walking, running and biking. The speed limit within OB II is 15mph and with the combination of current road conditions and construction activities, it's extremely important that everyone pays attention to this. Thanks for following the rules!

**Please recycle whenever possible. The Recycle Center is located at 5073 Deep Hole Rd. Open daily (except Tuesdays) from 7am – 6pm. There are additional bins for donations of clothing and shoes and a dumpster for used tires. Thank you for keeping our community clean.**

For community concerns that need urgent attention, call: Jack Keane 757.336.6854 or Kathy Bradley 302.743.3770.

I need your help with our newsletter! Email your ideas, photos, articles, recipes, secret fishing and crabbing spots, suggestions, etc. to [jhlovesdogs@yahoo.com](mailto:jhlovesdogs@yahoo.com).